

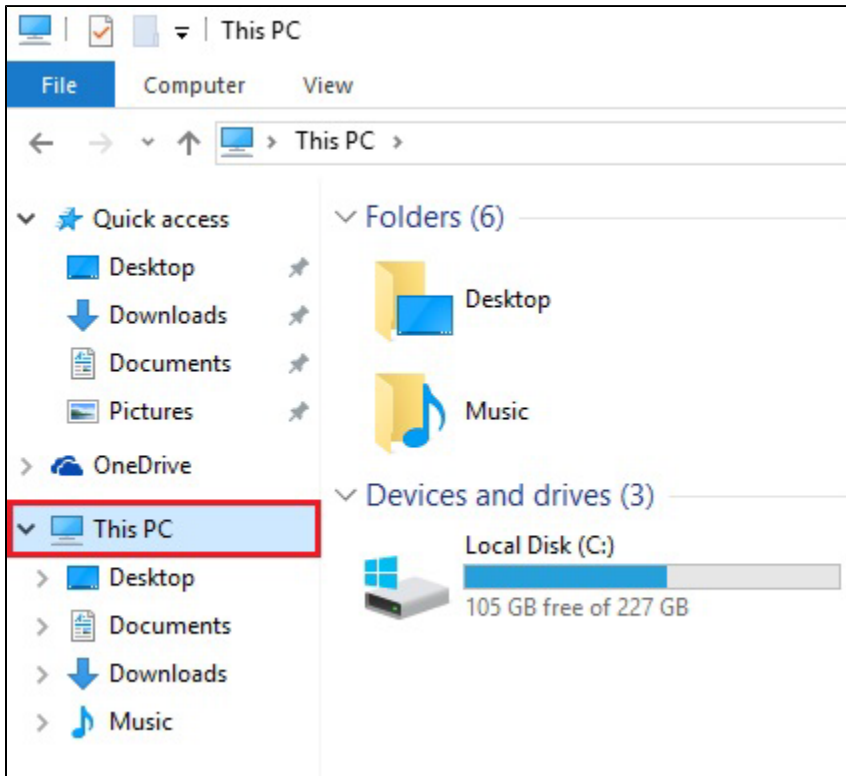
Map a network drive in Windows 10

NOTE: Depending on the service you are trying to connect to and your location/network, you may need a VPN. If you are connecting to TTU related services, it is possible that a connection to [TTUnet VPN](#) is required.

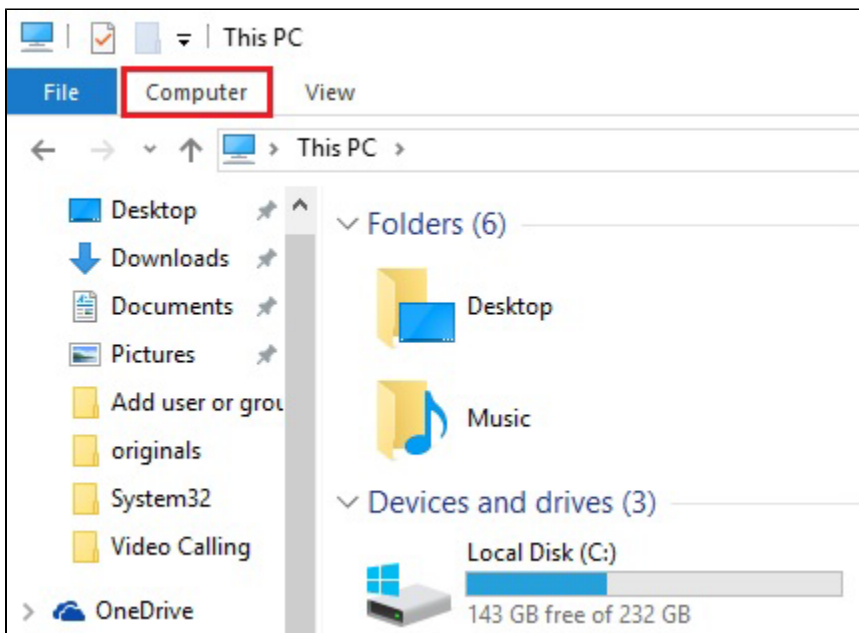
1) Click the **File Explorer** in your taskbar at the bottom of your desktop.



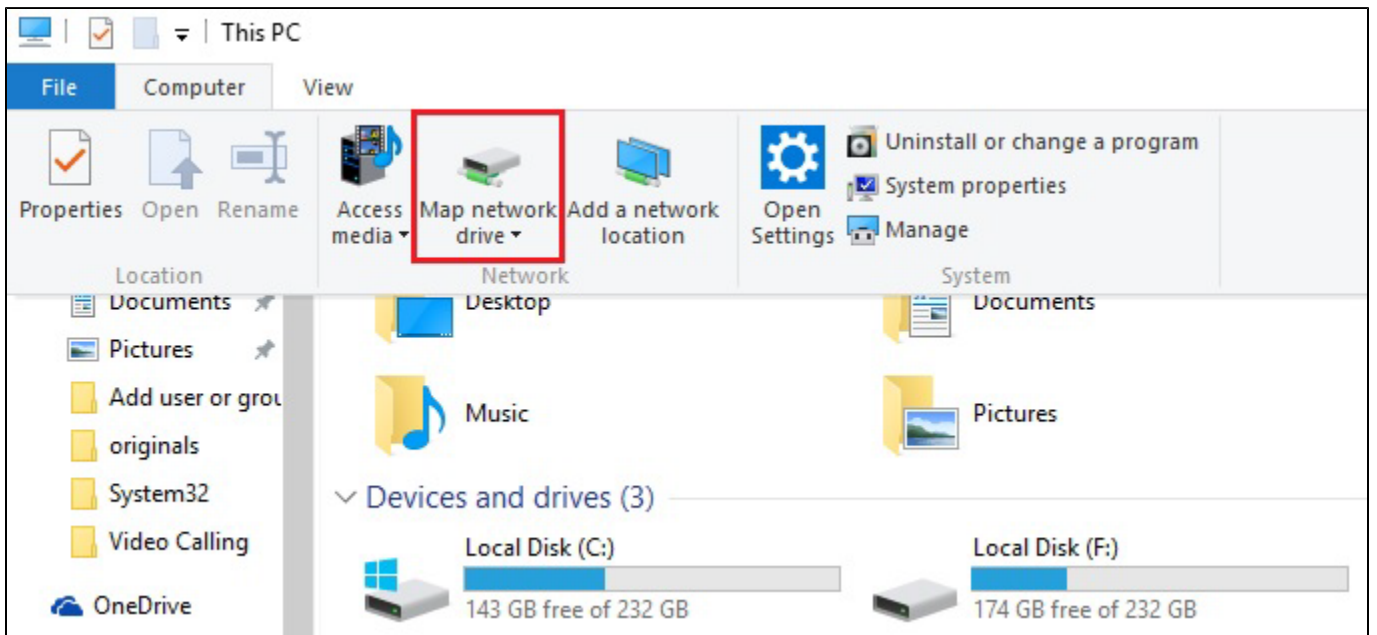
2) Click **This PC**.



3) Click **Computer**.

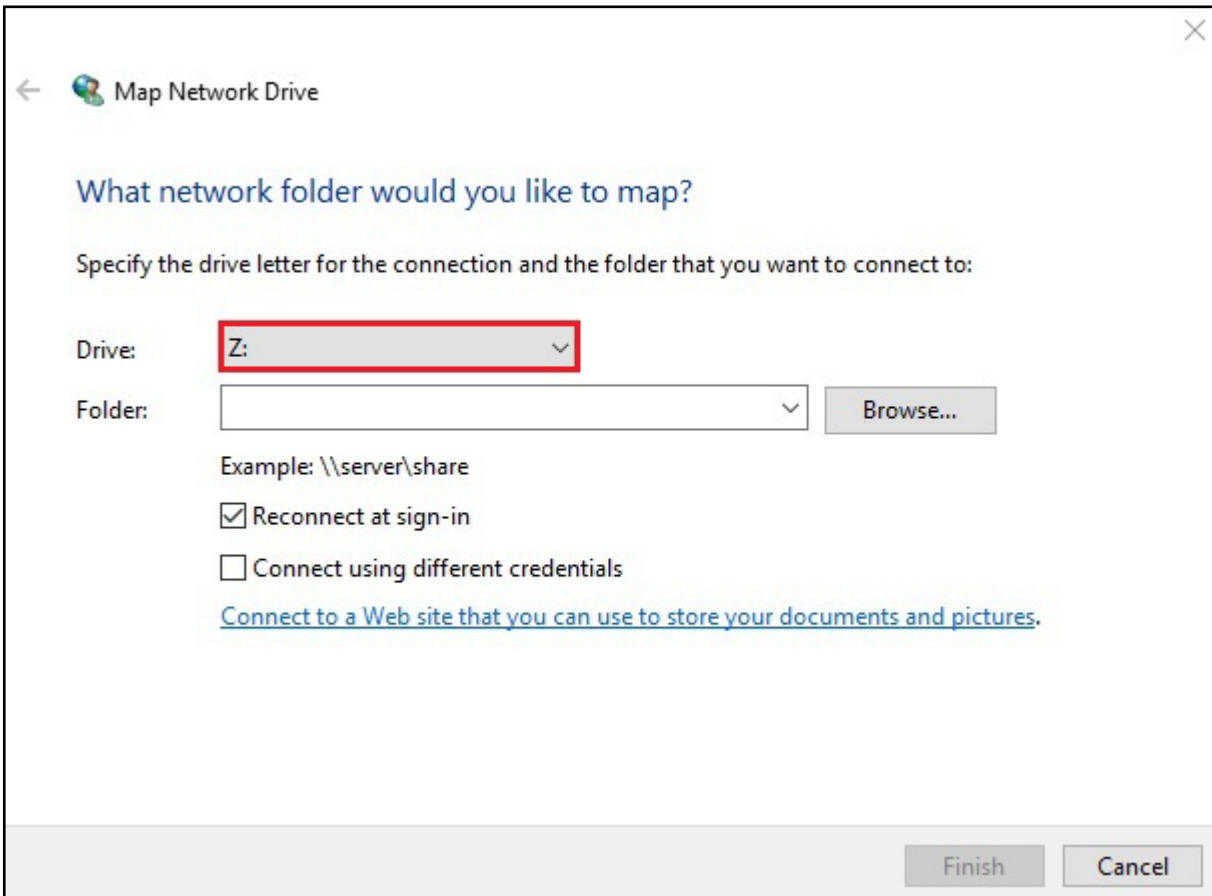


4) Click **Map Network drive**.

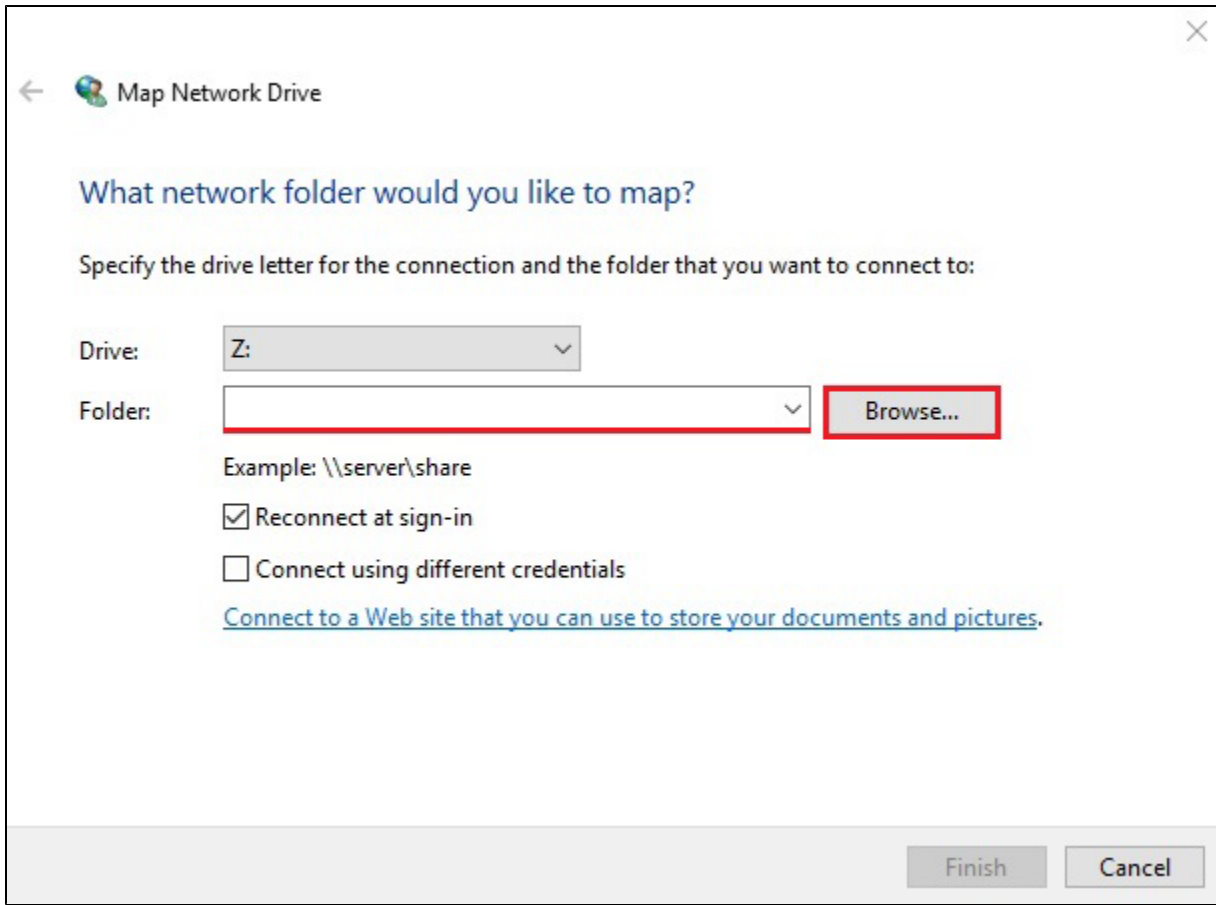


5) From the "Drive" drop-down list, choose any drive letter you wish.

TIP: Letters that are later in the alphabet such as "Z" are better and will result in less conflicts with external drives (i.e. USB drives).



6) Click the **Browse** button to locate the appropriate folder, or simply type the path into the field labeled "Folder."



Map Network Drive

What network folder would you like to map?

Specify the drive letter for the connection and the folder that you want to connect to:

Drive: Z: ▾

Folder: ▾ **Browse...**

Example: \\server\share

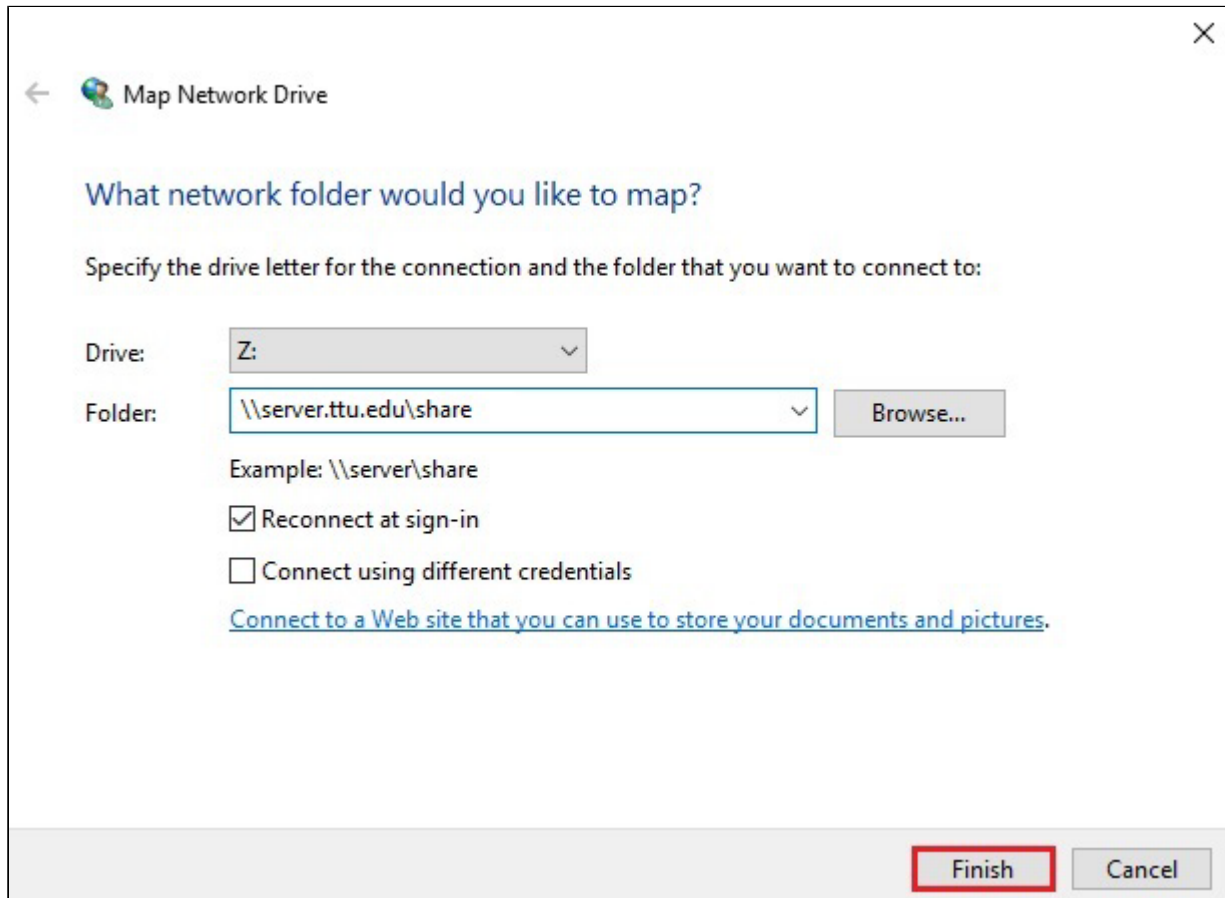
Reconnect at sign-in

Connect using different credentials

[Connect to a Web site that you can use to store your documents and pictures.](#)

Finish Cancel

7) Click **Finish**.



Map Network Drive

What network folder would you like to map?

Specify the drive letter for the connection and the folder that you want to connect to:

Drive: Z: ▾

Folder: \\server.ttu.edu\share ▾ Browse...

Example: \\server\share

Reconnect at sign-in

Connect using different credentials

[Connect to a Web site that you can use to store your documents and pictures.](#)

Finish Cancel