



"to be the premier center for environmental research, teaching, and service

[www.entx.ttu.edu](http://www.entx.ttu.edu)

## Graduate Program in Environmental Toxicology

The Department of Environmental Toxicology, the academic home for faculty and students in The Institute of Environmental and Human Health (TIEHH), offers graduate degrees in Environmental Toxicology through the College of Arts & Sciences. TIEHH and the Department of Environmental Toxicology offer students the opportunity to learn from nationally and internationally recognized faculty working in multidisciplinary teams to address critical environmental issues.

The academic program offers students the opportunity to study, understand, and interpret the behavior of chemical contaminants in the environment and their interactions with humans and other biological receptors. Generally, a strong background in the natural, physical, or health sciences will provide the necessary preparation for this program.

## Degree Programs

**M.S.** The student is required to complete a thesis and 36 hours of coursework. Students who possess varied backgrounds in the life sciences, agriculture, forestry, community and clinical medicine, as well as the physical sciences and engineering, are served by this program. The M.S. in Environmental Toxicology provides excellent preparation for entering a doctoral program Environmental Toxicology, Civil or Environmental Engineering, Environmental Management, or in related areas of the life sciences.

**Ph.D.** The student is required to complete a dissertation and 72 hours of coursework (36 hours beyond the M.S.). Doctoral graduates will be qualified to be fully successful at universities, colleges, government and non-governmental organizations, foundations, and industry.

**Joint Degree** The Department offers a joint degree, J.D./M.S. with the Texas Tech School of Law.

## Core Faculty

- **Todd Anderson, Ph.D.** [todd.anderson@ttu.edu](mailto:todd.anderson@ttu.edu)  
Professor, Environmental Chemistry
- **Jaclyn Cañas-Carrell, Ph.D.** [jaclyn.e.canas@ttu.edu](mailto:jaclyn.e.canas@ttu.edu)  
Professor, Analytical Toxicology
- **Jordan Crago, Ph.D.** [jordan.crago@ttu.edu](mailto:jordan.crago@ttu.edu)  
Assistant Professor, Aquatic Toxicology
- **Céline Godard-Codding, Ph.D.** [celine.godard@ttu.edu](mailto:celine.godard@ttu.edu)  
Professor, Associate Chair, Biochemical Toxicology
- **Ronald Kendall, Ph.D.** [ron.kendall@ttu.edu](mailto:ron.kendall@ttu.edu)  
Professor, Wildlife Toxicology
- **Greg Mayer, Ph.D.** [greg.mayer@ttu.edu](mailto:greg.mayer@ttu.edu)  
Associate Professor, Molecular Toxicology
- **Steve Presley, Ph.D.** [steve.presley@ttu.edu](mailto:steve.presley@ttu.edu)  
Professor and Chair, Infectious Diseases
- **Seshadri Ramkumar, Ph.D.** [s.ramkumar@ttu.edu](mailto:s.ramkumar@ttu.edu)  
Professor, Countermeasures to Chemical Toxins
- **Kamaleshwar Singh, Ph.D.** [kamaleshwar.singh@ttu.edu](mailto:kamaleshwar.singh@ttu.edu)  
Associate Professor, Environmental Genomics
- **Ernest Smith, Ph.D.** [ernest.smith@ttu.edu](mailto:ernest.smith@ttu.edu)  
Professor, Reproductive Toxicology
- **Philip Smith, Ph.D.** [phil.smith@ttu.edu](mailto:phil.smith@ttu.edu)  
Associate Professor, Terrestrial Ecotoxicology
- **Degeng Wang, Ph.D.** [degeng.wang@ttu.edu](mailto:degeng.wang@ttu.edu)  
Associate Professor, Biostatistics & Molecular Toxicology





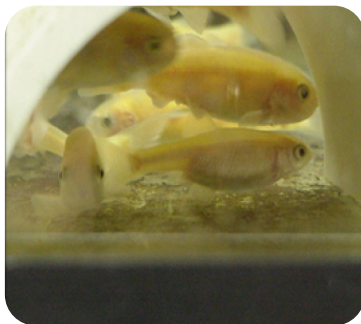
# The Department of Environmental Toxicology



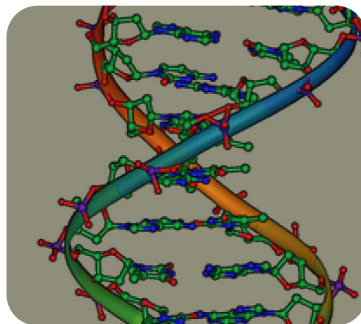
## Academic Research Programs Offered



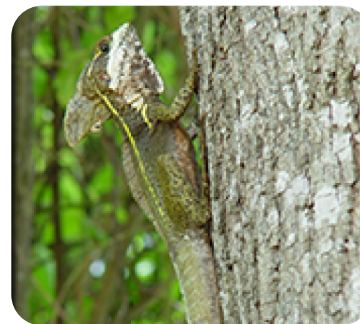
Analytical Toxicology



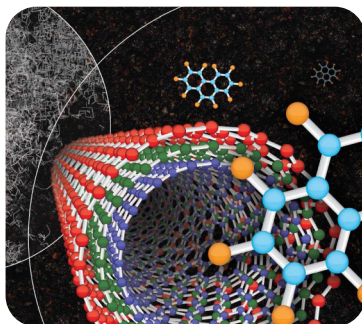
Aquatic Toxicology



Human Health Sciences



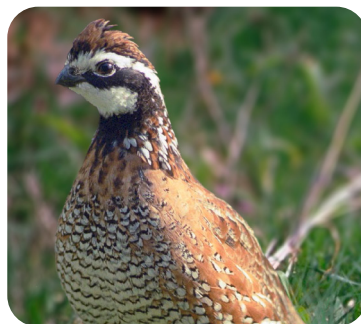
Ecotoxicology



Nanotoxicology



Biological Threats  
In The Environment



Wildlife Toxicology



White-Tailed Deer and  
Cervids Research Program



Biochemical, Mechanistic,  
Endangered Species Toxicology



Chemical Countermeasures  
and Advanced Materials

## Alumni Careers

Graduates with an M.S. or Ph.D. degree from this Department will have numerous opportunities to work in corporate, government, or academic fields. Graduates have been employed by such organizations as CH2M Hill, DuPont, Dow AgroSciences, Syngenta, Genesis Laboratories, U.S. Fish & Wildlife Service, U.S. Environmental Protection Agency, Texas Commission on Environmental Quality, and esteemed universities around the country.

Box 41163  
Lubbock, TX 79409-1163  
806-742-4567

Dr. Kamalshwar Singh  
Graduate Advisor  
kamalshwar.singh@ttu.edu

Analisa Guevara  
Graduate Program Coordinator  
analisa.guevara@ttu.edu